

## PIN VIDEO

### OVERVIEW

Pin video allows you to disable active speaker view and only view a specific speaker. It will also only record the pinned video if you are recording locally (to your computer). Pinning another participant's video will only affect your local view and local recordings, not the view of other participants or cloud recordings.

This article covers pinning videos on the Zoom Desktop Client. [Learn how to pin in Zoom Rooms.](#)

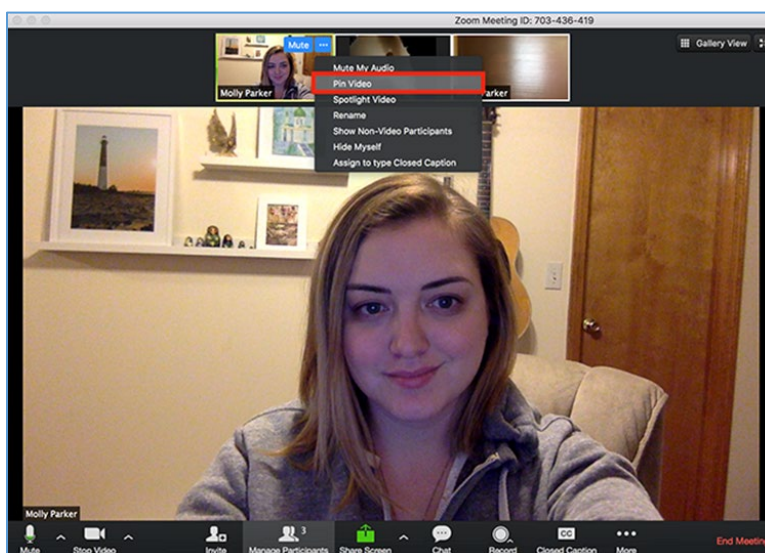
Alternatively, you can spotlight a video. Spotlight video puts a participant as the primary active speaker for all participants. All participants will only see this speaker as the active speaker. This feature is often used to spotlight a keynote speaker. [Learn more about spotlighting a video.](#)

### PREREQUISITES

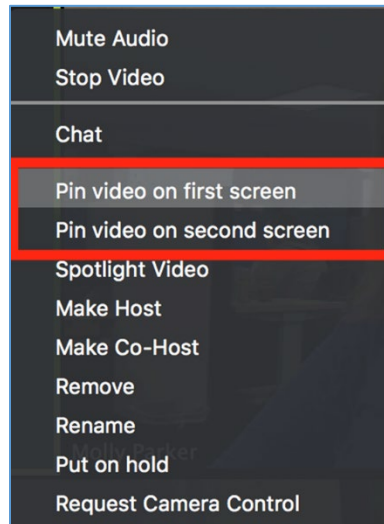
- Zoom Desktop Client for PC, Mac, or Linux
- Zoom Mobile Client for Android or iOS
- 2 participants or more sharing video
- (Optional) You can pin a second screen if are you using [dual monitor](#).

### TO PIN A VIDEO IN MAC

- At the top of your screen, hover over the video of the participant you want to pin and click ...
- From the menu, choose **Pin Video**.

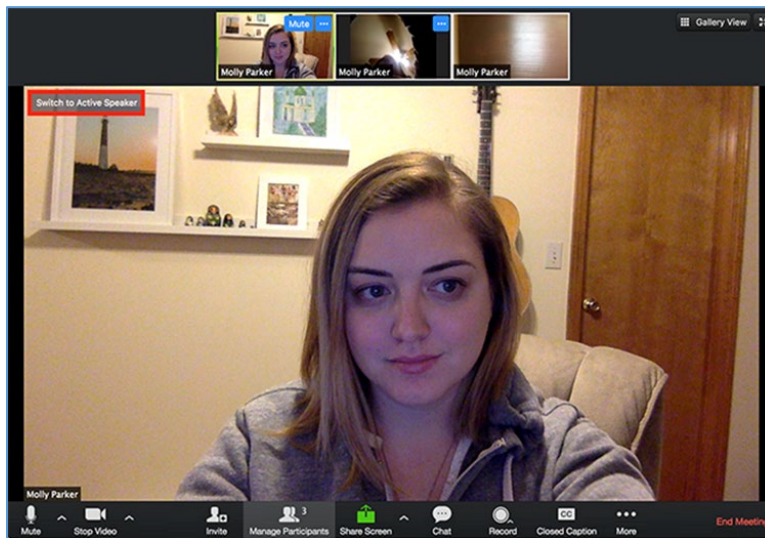


- Optional: If you have at least 3 participants in the meeting and dual monitor enabled, you will have the option to choose if you want to pin to your first screen or your second screen.



## TO CANCEL A PIN

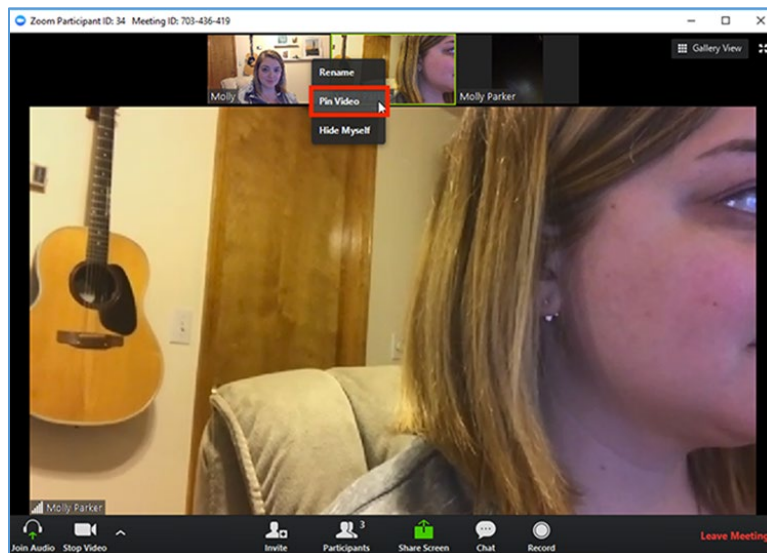
- Click **Switch to Active Speaker** in the upper left corner.



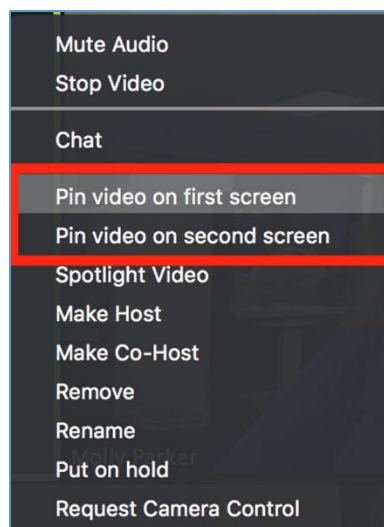
- This will return the meeting to Active Speaker.

## TO PIN A VIDEO IN WINDOWS

- At the top of your screen, hover over the video of the participant you want to pin and click ...
- From the menu, choose **Pin Video**.

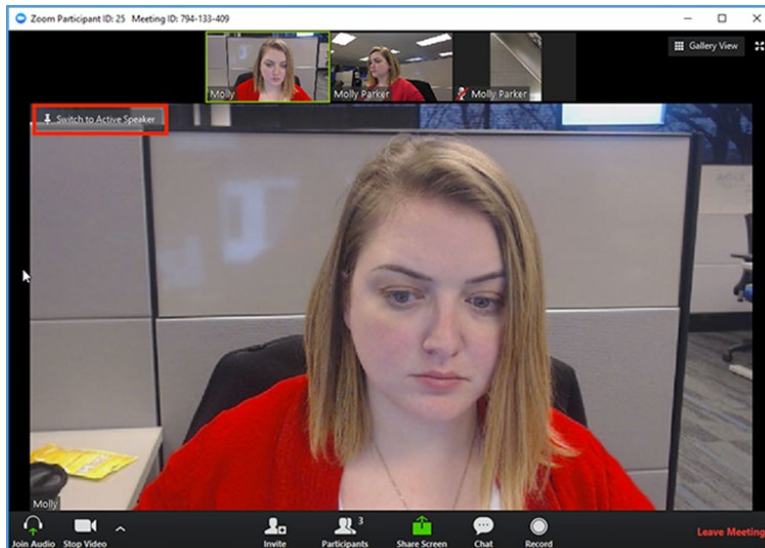


- Optional: If you have at least 3 participants in the meeting and dual monitor enabled, you will have the option to choose if you want to pin to your first screen or your second screen.



## TO CANCEL A PIN

- Click **Switch to Active Speaker** in the upper left corner.



- This will return the meeting to Active Speaker.

For assistance with [Zoom](#) contact Academic Innovation:  
[academicinnovation@utsa.edu](mailto:academicinnovation@utsa.edu) or (210) 458-4520